

 **BOEING**
COMPONENT
MAINTENANCE MANUAL

TO: ALL HOLDERS OF AUXILIARY POWER UNIT ACCESS DOOR ASSEMBLY COMPONENT
MAINTENANCE MANUAL 52-48-33

REVISION NO. 2 DATED NOV 01/02

HIGHLIGHTS

All data formerly in manual 52-48-31 is included in this manual 52-48-33.
Pages which have been added or revised are outlined below together with the
highlights of the revision. Remove and insert the affected pages as listed and
enter Revision No. and date on the Record of Revision Sheet.

CHAPTER/SECTION

AND PAGE NO.

1002-1024

DESCRIPTION OF CHANGE

Added an optional ground stud assembly 287T0015-666.

52-48-33

HIGHLIGHTS

01.101

Page 1

Mar 01/03

AUXILIARY POWER UNIT ACCESS DOOR ASSEMBLY

PART NUMBERS 148T6550-1 THRU -5

COMPONENT MAINTENANCE MANUAL
WITH
ILLUSTRATED PARTS LIST

52-48-33

TITLE PAGE

Page 1

Jul 01/02

01.1



REVISION RECORD

- Retain this record in front of manual. On receipt of revision, insert revised pages in the manual, and enter revision number, date inserted and initial.

REVISION NUMBER	REVISION DATE	DATE FILED	BY	REVISION NUMBER	REVISION DATE	DATE FILED	BY



TEMPORARY REVISION AND SERVICE BULLETIN RECORD

BOEING SERVICE BULLETIN	BOEING TEMPORARY REVISION	OTHER DIRECTIVE	DATE OF INCORPORATION INTO MANUAL

52-48-33

TR & SB RECORD

01

Page 1

Oct 01/87


BOEING
 COMPONENT
 MAINTENANCE MANUAL

PAGE	DATE	CODE	PAGE	DATE	CODE
52-48-33			REPAIR 1-1		
			601	JUL 01/02	01.1
			602	BLANK	
TITLE PAGE			REPAIR 2-1		
1	JUL 01/02	01.1	601	JUL 01/02	01.1
2	BLANK		602	JUL 01/02	01.1
REVISION RECORD			ASSEMBLY		
1	OCT 01/87	01	701	OCT 01/87	01
2	BLANK		702	BLANK	
TR & SB RECORD			ILLUSTRATED PARTS LIST		
1	OCT 01/87	01	1001	OCT 01/87	01
2	BLANK		*1002	NOV 01/02	01.1
LIST OF EFFECTIVE PAGES			*1003	NOV 01/02	01.1
*1	NOV 01/02	01	*1004	NOV 01/02	01.1
THRU LAST PAGE			*1005	NOV 01/02	01.1
CONTENTS			*1006	NOV 01/02	01.1
1	OCT 01/87	01	*1007	NOV 01/02	01.1
2	BLANK		*1008	NOV 01/02	01.1
INTRODUCTION			*1009	NOV 01/02	01.1
1	OCT 01/87	01	*1010	NOV 01/02	01.1
2	BLANK		*1011	NOV 01/02	01.1
DESCRIPTION & OPERATION			*1012	NOV 01/02	01.1
1	OCT 01/87	01	*1013	NOV 01/02	01.1
2	BLANK		*1014	NOV 01/02	01.1
DISASSEMBLY			*1015	NOV 01/02	01.1
301	OCT 01/87	01	*1016	NOV 01/02	01.1
302	BLANK		*1017	NOV 01/02	01.1
CHECK			*1018	NOV 01/02	01.1
501	JUL 01/02	01.1	*1019	NOV 01/02	01.1
502	BLANK		*1020	NOV 01/02	01.1
REPAIR-GENERAL			*1021	NOV 01/02	01.1
601	JUL 01/02	01.1	*1022	NOV 01/02	01.1
602	JUL 01/02	01.1	*1023	NOV 01/02	01.1
			*1024	NOV 01/02	01.1

* = REVISED, ADDED OR DELETED

52-48-33
 EFFECTIVE PAGES
 LAST PAGE Page 1
 01 Nov 01/02



TABLE OF CONTENTS

<u>Paragraph Title</u>	<u>Page</u>
Description and Operation.	1
Testing/Trouble Shooting (not applicable)	
Disassembly.	301
Cleaning * [1]	
Check.	501
Repair	601
Assembly	701
Fits and Clearances (not applicable)	
Special Tools (not applicable)	
Illustrated Parts List	1001

*[1] Special instructions not required. Use standard industry practices.

52-48-33



INTRODUCTION

The instructions in this manual provide the information necessary to perform maintenance functions ranging from simple checks and replacement to complete shop-type repair.

This manual is divided into separate sections:

- | | |
|--|------------------------------|
| 1. Title Page | 4. List of Effective Pages |
| 2. Record of Revisions | 5. Table of Contents |
| 3. Temporary Revision &
Service Bulletin Record | 6. Introduction |
| | 7. Procedures & IPL Sections |

Refer to the Table of Contents for the page location of applicable sections. An asterisked flagnote *[] in place of the page number indicates that no special instructions are provided since the function can be performed using standard industry practices.

The beginning of the REPAIR section includes a list of the separate repairs and a list of applicable standard Boeing practices.

An explanation of the use of the Illustrated Parts List is provided in the Introduction to that section.

All weights and measurements used in the manual are in English units, unless otherwise stated. When metric equivalents are given they will be in parentheses following the English units.

Design changes, optional parts, configuration differences and Service Bulletin modifications create alternate part numbers. These are identified in the Illustrated Parts List (IPL) by adding an alphabetical character to the basic item number. The resulting item number is called an alpha-variant. Throughout the manual, IPL basic item number references also apply to alpha-variants unless otherwise indicated.

Verification:

Assembly

52-48-33

INTRODUCTION

01

Page 1

Oct 01/87



AUXILIARY POWER UNIT ACCESS DOOR ASSEMBLY

DESCRIPTION AND OPERATION

1. Description

- A. The APU access door assembly consists of a conventional frame and stringer construction door with aluminum skin, four latches and U-bolts, a detent latch, and a door stop.

2. Operation

- A. The door assembly covers the auxiliary power unit compartment opening in the empennage.

3. Leading Particulars (Approximately)

Height -- 10 inches
Length -- 74 inches
Width -- 36 inches
Weight -- 56 pounds

52-48-33

DESCRIPTION & OPERATION

01

Page 1

Oct 01/87



DISASSEMBLY

1. Use standard industry practices for disassembly of this component, with additional procedures as follows.
2. Note number of shims (205, IPL Fig. 1) for reference during assembly.
3. Note thickness and number of shims (105, 110) per latch (130) for reference during assembly.
4. Note number and location of washers (145) per latch (130) for reference during assembly.

52-48-33

DISASSEMBLY

01

Page 301

Oct 01/87



CHECK

1. Check all parts for obvious defects in accordance with standard industry practices.
2. Magnetic particle check per SOPM 20-20-01 -- alignment pin (40, IPL Fig. 1), U-bolt (70).
3. Penetrant check per SOPM 20-20-02 -- latch pivot fitting (165), hinge fittings (300C, 305C).

52-48-33

CHECK

01.1

Page 501

Jul 01/02

REPAIR – GENERAL1. Content

- A. Repair, refinish and replacement procedures are included in separate repair sections as follows:

<u>P/N</u>	<u>NAME</u>	<u>REPAIR</u>
148T6511	HINGE ASSY	1-1
- -	MISCELLANEOUS PARTS	2-1

2. Standard Practices

- A. Refer to the following standard practices as applicable, for details of procedures in individual repairs.

SOPM 20-10-01	Repair and Refinish of High Strength Steel Parts
SOPM 20-30-02	Stripping of Protective Finishes
SOPM 20-30-03	General Cleaning Procedures
SOPM 20-41-01	Decoding Table for Boeing Finish Codes
SOPM 20-42-05	Bright Cadmium Plating
SOPM 20-43-01	Chromic Acid Anodizing
SOPM 20-50-03	Bearing Installation and Retention
SOPM 20-50-07	Lubrication
SOPM 20-50-08	Application of Dry Lubricant

3. Materials

NOTE: Equivalent substitutes may be used.

- A. Coating, teflon filled -- BMS 10-86, Type 1 or Type 2, color white
(Ref SOPM 20-60-02)
- B. Finish, corrosion resistant -- BMS 10-20 (Ref SOPM 20-60-02)
- C. Lubricant, dry film -- BMS 3-8 (Ref SOPM 20-60-03)
- D. Primer -- BMS 10-11, Type 1 (Ref SOPM 20-60-02)

52-48-33

REPAIR-GENERAL

01.1

Page 601

Jul 01/02

- | E. Primer -- BMS 10-79, Type 3 (Ref SOPM 20-60-02)
- | F. Sealant -- BMS 5-95 (Ref SOPM 20-60-04)

52-48-33

REPAIR-GENERAL

01.1

Page 602

Jul 01/02



HINGE ASSEMBLY – REPAIR 1-1

148T6511-19, -20

NOTE: Refer to REPAIR – GENERAL for a list of applicable standard practices.

1. Bushing Replacement (295, IPL Fig. 1)

A. Remove the bushings.

B. Install the bushings as specified in SOPM 20-50-03 with wet BMS 5-95 sealant.

2. Refinish

A. Fitting (300C, 305C) -- Chromic acid anodize (F-17.04) and apply BMS 10-79, Type 3 primer (F-19.47) to all surfaces but do not put primer in the holes for the spring pins (293) or bushings (295). Material: Aluminum alloy.

52-48-33

REPAIR 1-1

01.1

Page 601

Jul 01/02

MISCELLANEOUS PARTS - REPAIR 2-1

1. Repair of parts listed in Fig. 601 consists of restoration of the original finish.

IPL FIG. & ITEM	MATERIAL	FINISH
Skin panel (215, 220)	Al alloy	Interior - Chemical treat surface and apply one coat BMS 10-11, type 1 primer (F-18.06) all over. Exterior - apply no finish, except that temporary coatings may be applied as required for protection during handling, transportation and storage (F-25.01).
Retainer (255), Fitting (165), guard (10), angle (330), zee (333L)	Al alloy	Chromic acid anodize and apply one coat BMS 10-11, type 1 primer (F-18.13) all over.
Scupper (155)	Al alloy	Chemical treat surface and apply one coat of BMS 10-11, type 1 primer (F-18.06) all over.
Detent latch (35)	17-7PH CRES 180-200 ksi	Passivate (F-17.09).

Refinish Details
 Figure 601 (Sheet 1)

52-48-33

REPAIR 2-1

01.1

Page 601

Jul 01/02

IPL FIG. & ITEM	MATERIAL	FINISH
Plate (95)	Al alloy	Chemical treat or chromic acid anodize. Apply one coat BMS 10-11, type 1 primer (F-18.05) all over. Apply BMS 10-86 type 1 or type 2 coating, color white, to non-shim-facing surface (SRF-14.9624).
Plate (60)	17-7PH CRES, 150-170 ksi	Cadmium plate and apply one coat of BMS 10-11, type 1 primer (F-16.01) all over.
U-Bolt (70)	4340 Steel, 150-170 ksi	Cadmium plate and apply one coat BMS 10-11, type 1 primer (F-16.02) all over, except omit primer from threaded area.
Alignment pin (40)	17-4PH CRES, 180-200 ksi	Apply dry film lubricant per SOPM 20-50-08 to non-threaded end.
Zee (350)	Al alloy	Chromic acid anodize (F-17.02). Apply one coat BMS 10-20, type 2 corrosion resistant finish (F-19.22) all over.

 Refinish Details
 Figure 601 (Sheet 2)

52-48-33

REPAIR 2-1

01.1

Page 602

Jul 01/02

ASSEMBLY1. Materials

NOTE: Equivalent substitutes may be used.

A. Compound, potting -- BMS 5-28, type 12 (Ref 20-60-04)

2. Assembly

A. Use standard industry practices for assembly of this component, and additional procedures as follows.

B. Verify that end holes on hinge assembly are plugged to depth of 0.10-0.15 inch. If not, plug with BMS 5-28, type 12 potting compound.

C. Install shims (205, IPL Fig. 1), bolts (180, 195), nuts (190, 210), washers (185, 200), and stop pads (175). Quantity of shims (205) per Disassembly. To facilitate door installation on airplane, do not tighten nuts (190, 210). Attach tag stating "Nuts (BACN10JC4) not tightened".

D. Install shims (105, 110), plates (95) and screws (100). Quantity of shims per Disassembly. To facilitate door installation on airplane, do not tighten screws or delaminate shims. Attach tags stating "Screw (NAS514P1032-10P) not tightened. Shims (148T6559-30, -31) not delaminated".

E. Install U-bolts (70), nuts (80, 85, 90), and washers (75). To facilitate door installation on airplane, do not tighten nuts (80, 85, 90) or lockwire nuts (90). Attach tags stating "Nuts (AN316-5R, BACN10HR5, NAS509-5) not tightened" and "Lockwire nuts (NAS509-5) together upon door installation using MS20955C32 lockwire per 20-50-02".

F. Center latch (130) by arranging eight washers (145) as noted during Disassembly.

G. Install latch (130), and tighten nut (150) so that latch is just not free to rotate. Then back nut off 1/4 to 1/2 turn until latch rotates freely and install cotter pin. Outside surface of latch must be flush with outside contour within ± 0.040 inch.

H. Install all cotter pins and safety wire per 20-50-02.

52-48-3301 ASSEMBLY
Page 701
Oct 01/87



ILLUSTRATED PARTS LIST

1. This section lists and illustrates replaceable or repairable component parts. The Illustrated Parts Catalog contains a complete explanation of the Boeing part numbering system.

2. Indentures show parts relationships as follows:

Assembly

Detail Parts for Assembly

Subassembly

Attaching Parts for Subassembly

Detail Parts for Subassembly

Detail Installation Parts (Included only if installation parts may be returned to shop as part of assembly)

3. One use code letter (A, B, C, etc.) is assigned in the EFF CODE column for each variation of top assembly. All listed parts are used on all top assemblies except when limitations are shown by use code letter opposite individual part entries.

4. Letter suffixes (alpha-variants) are added to item numbers for optional parts, Service Bulletin modification parts, configuration differences (except left- and right-hand parts), product improvement parts, and parts added between two sequential item numbers. The alpha-variant is not shown on illustrations when appearance and location of all variants of the part is the same.

5. Service Bulletin modifications are shown by the notations PRE SB XXXX and POST SB XXXX.

A. When a new top assembly part number is assigned by Service Bulletin, the notations appear at the top assembly level only. The configuration differences at detail part level are then shown by use code letter.

B. When the top assembly part number is not changed by the Service Bulletin, the notations appear at the detail part level.

6. Parts Interchangeability

Optional
(OPT)

The parts are optional to and interchangeable with other parts having the same item number.

Supersedes, Superseded By
(SUPSDS, SUPSD BY)

The part supersedes and is not interchangeable with the original part.

Replaces, Replaced By
(REPLS, REPLD BY)

The part replaces and is interchangeable with, or is an alternate to, the original part.

52-48-33

ILLUSTRATED PARTS LIST

01

Page 1001

Oct 01/87

VENDORS

06710 LAMSON AND SESSIONS CO THE VALLEY-TODECO
12975 BRADLEY AVENUE
SYLMAR, CALIFORNIA 91342-3830
FORMERLY VALLEY BOLT CORP VB0097 IN NORTH HOLLYWOOD, CA

08524 DEUTSCH FASTENER CORP SEE CODE V97928

11815 CHERRY AEROSPACE FASTENERS DIV OF TEXTRON
1224 EAST WARNER AVENUE PO BOX 2157
SANTA ANA, CALIFORNIA 92707-0157
FORMERLY IN LOS ANGELES, CALIF , FORMERLY CHERRY FASTENERS
TOWNSEND DIV OF TEXTRON INC V71087

15653 FAIRCHILD FASTENERS KAYNAR PRODUCTS DIV
800 S STATE COLLEGE BLVD
FULLERTON, CALIFORNIA 92831-3001
FORMERLY VK6405 MICRODOT AEROSP LTD; FORMERLY KAYNAR TECH
KAYNAR DIV

27238 BRISTOL INDUSTRIES
630 EAST LAMBERT ROAD PO BOX 630
BREA, CALIFORNIA 92621-4119

5M902 FAIRCHILD IND INC FAIRCHILD AEROSPACE FASTENER DIV
3016 W LOMITA BLVD
TORRANCE, CALIFORNIA 90505-5103
FMLY IN REDONDO BEACH, CALIF

52828 REPUBLIC FASTENER MFG CORP
1300 RANCHO CONEJO BLVD
NEWBURY PARK, CALIFORNIA 91320-1405
FORMERLY IN SYLMAR, CALIFORNIA

56878 SPS TECHNOLOGIES INC AEROSPACE AND INDUSTRIAL PRODUCTS DIV
HIGHLAND AVENUE
JENKINTOWN, PENNSYLVANIA 19046
FORMERLY STANDARD PRESSED STEEL

60516 WEST COAST AEROSPACE INC
812 MIRAFLORES STREET
SAN PEDRO, CALIFORNIA 90731-1439

62554 SIMMONDS MECAERO FASTENERS INC
1734 SEQUOIA AVENUE
ORANGE, CALIFORNIA 92668

71087 BOOTS ACFT NUT DIV TOWNSEND CO SEE TEXTRON INC CHERRY
FASTENER TOWNSEND DIV V11815

52-48-33

ILLUSTRATED PARTS LIST
01.1 Page 1002
Nov 01/02

**BOEING**
COMPONENT
MAINTENANCE MANUALVENDORS

72962 HARVARD INDUSTRIES INC
3 WERNER WAY SUITE 210
LEBANON, NEW JERSEY 08833
FORMERLY AMERACE CORP ESNA DIV
FORMERLY ELASTIC STOP NUT IN UNION, NJ

73197 HI-SHEAR TECHNOLOGY CORP
2600 SKYPARK DRIVE
TORRANCE, CALIFORNIA 90509

80539 SPS TECHNOLOGIES INC AEROSPACE PRODUCTS DIV
2701 SOUTH HARBOR BOULEVARD PO BOX 1259
SANTA ANA, CALIFORNIA 92702-1259
FORMERLY NUTT-SHEL DIV OF SPC WESTERN CO V80539
AND STANDARD PRESSED STEEL WESTERN DIV V17279

83014 HARTWELL CORPORATION
900 SOUTH RICHFIELD ROAD
PLACENTIA, CALIFORNIA 92670-6732
FORMERLY V0532B IN LOS ANGELES, CALIFORNIA

92215 FAIRCHILD IND INC FAIRCHILD AEROSPACE FASTENER DIV
3010 W LOMITA BLVD
TORRANCE, CALIFORNIA 90505-5102
FORMERLY VOI-SHAN IN CULVER CITY, CALIF

97928 HUCK INTL INC
3969 PARAMOUNT BLVD
LAKEWOOD, CALIFORNIA 90712-4193

52-48-33ILLUSTRATED PARTS LIST
01.1 Page 1003
Nov 01/02

PART NUMBER	AIRLINE PART NO.	FIG.	ITEM	TTL REQ
AN316-5R		1	85	8
AN960PD10		1	25	2
		1	125	4
AN960PD416		1	45	4
AN960PD416L		1	145	40
		1	185	2
		1	200	1
AN960PD516		1	75	16
AN960PD8		1	265	30
BACB30FN8-19		1	180	2
BACB30LK3-3		1	20	1
BACB30LR4-20		1	195	1
BACB30NE4D30		1	140	4
BACN10HR4		1	55	4
BACN10HR4CD		1	55A	4
BACN10HR5		1	80	8
BACN10HR5CD		1	80A	8
BACN10JC08		1	260	30
BACN10JC3		1	30	1
BACN10JC4		1	190	2
		1	210	1
BACN10JD4		1	150	4
BACN10JN3		1	365	8
BACN10JP3A		1	325	8
		1	345A	1
BACN10JP3B		1	325A	8
		1	333	1
		1	345	1
BACR15BA3AD		1	320	16
		1	332L	2
		1	340	2
		1	360	16
BACR15CE5		1	65	16
BACR15FT4AD		1	160	16
BACR15FT5		1	170	32
BACR15FT5AD		1	15	1
		1	290	182
		1	310	21
BACS40R10B14F		1	205	4
BACS53B1EA1		1	333D	1
BH003024CD		1	55A	4
BH00303CM4		1	55A	4
BH00303CM5		1	80A	8

52-48-33

 ILLUSTRATED PARTS LIST
 01.1 Page 1004
 Nov 01/02


BOEING
 COMPONENT
 MAINTENANCE MANUAL

PART NUMBER	AIRLINE PART NO.	FIG.	ITEM	TTL REQ
BMNN10HR4		1	55	4
BMNN10HR5		1	80	8
BMN10HR4		1	55	4
BMN10HR4CD		1	55A	4
BMN10HR5		1	80	8
BMN5024CWD3-4		1	55A	4
BMN5024CWD35		1	80A	8
BMN5024CW34		1	55A	4
BRFM20A3		1	365	8
BRH10A08		1	260	30
BRH10A3		1	30	1
BRM100A3		1	325A	8
		1	333	1
		1	345	1
BRM200A3		1	325	8
		1	345A	1
CR59064		1	55	4
CR59065		1	80	8
CR60304		1	55A	4
CR60305		1	80A	8
HL19PB8-19		1	180	2
H10-08BAC		1	260	30
H10-3BAC		1	30	1
H245-7		1	130	4
H245-9		1	130A	4
H51560		1	55A	4
H51560-4		1	55A	4
H51560-5		1	80A	8
H96-4		1	55	4
H96-5		1	80	8
H964		1	55	4
H964CD		1	55A	4
H965		1	80	8
MF1000-3BAC		1	365	8
MF53049-3		1	365	8
MK1000-3BAC		1	325	8
		1	345A	1
MK2000-3BAC		1	325A	8
		1	333	1
		1	345	1
MS16562-191		1	293	2
MS20392-2C63		1	120	4
MS24665-132		1	115	4
MS24665-134		1	135	4
MS35338-43		1	333J	1
MS35650-305T		1	333K	1
NAS1149D0316H		1	333H	2

52-48-33

 ILLUSTRATED PARTS LIST
 01.1 Page 1005
 Nov 01/02

PART NUMBER	AIRLINE PART NO.	FIG.	ITEM	TTL REQ
NAS1801-3-12		1	333G	1
NAS43DD3-4		1	270	30
NAS509-5		1	90	8
NAS514P1032-10P		1	100	8
NAS514P832-7		1	275	30
NAS549ML516		1	50	4
NS103197-02		1	325	8
		1	345A	1
NS103198-02		1	325A	8
		1	333	1
		1	345	1
NS103218-02		1	365	8
NS202101-02		1	30	1
NS202101-82		1	260	30
RMA9201M3		1	325	8
		1	345A	1
RMA9207-3		1	325A	8
		1	333	1
		1	345	1
RMF9201M3		1	365	8
RMLH22-5		1	80	8
RMLH224		1	55	4
RMLH224CD		1	55A	4
RMLH225		1	80	8
RMLH9075-3W		1	30	1
RMLH9075-82W		1	260	30
SL7058S524		1	80	8
SL7108C4		1	55A	4
SL7108C5		1	80A	8
SL7108C524		1	80A	8
TL10185-103		1	130B	4
T6S1032J		1	30	1
T6S832J		1	260	30
T8076S1032		1	325	8
T8076S1032		1	345A	1
T8077S1032		1	325A	8
		1	333	1
		1	345	1
VAL280094		1	55	4
VAL280095		1	80	8
VCU0005D4		1	55A	4
VCU0005D5		1	80A	8
VNS1924CA1-8		1	333D	1

52-48-33

 ILLUSTRATED PARTS LIST
 01.1 Page 1006
 Nov 01/02


BOEING
 COMPONENT
 MAINTENANCE MANUAL

PART NUMBER	AIRLINE PART NO.	FIG.	ITEM	TTL REQ
VNS1924CA3-1-8		1	333D	1
VN201A1-02		1	325A	8
		1	333	1
		1	345	1
VN202A1-02		1	325	8
		1	345A	1
VN252A02		1	365	8
VN303A02		1	30	1
VN303A82		1	260	30
WC258-19		1	180	2
10-60401-6		1	130	4
102LH9031-4		1	55A	4
102LH9031-5		1	80A	8
102LH90314		1	55A	4
102LH90315		1	80A	8
148T6511-19		1	280B	1
148T6511-20		1	285B	1
148T6511-21		1	300C	1
148T6511-22		1	305C	1
148T6514-1		1	175	1
148T6550-1		1	1	RF
148T6550-2		1	5	RF
148T6550-3		1	1A	RF
148T6550-4		1	5A	RF
148T6550-5		1	1B	RF
148T6551-1		1	215	1
148T6551-13		1	215B	1
148T6551-2		1	220	1
148T6551-7		1	215A	1
148T6551-8		1	220A	1
148T6558-7		1	355	1
148T6559-30		1	110	4
148T6559-31		1	105	4
148T6559-34		1	255	1
148T6560-1		1	165	8
148T6566-1		1	225	1
148T6566-10		1	245	1
148T6566-12		1	250	1
148T6566-13		1	252	1
148T6566-14		1	240A	1
148T6566-2		1	230	1
148T6567-1		1	155	4
148T6568-3		1	10	1
148T6569-1		1	35	1
148T8223-1		1	295	5
287T0014-209		1	335	1

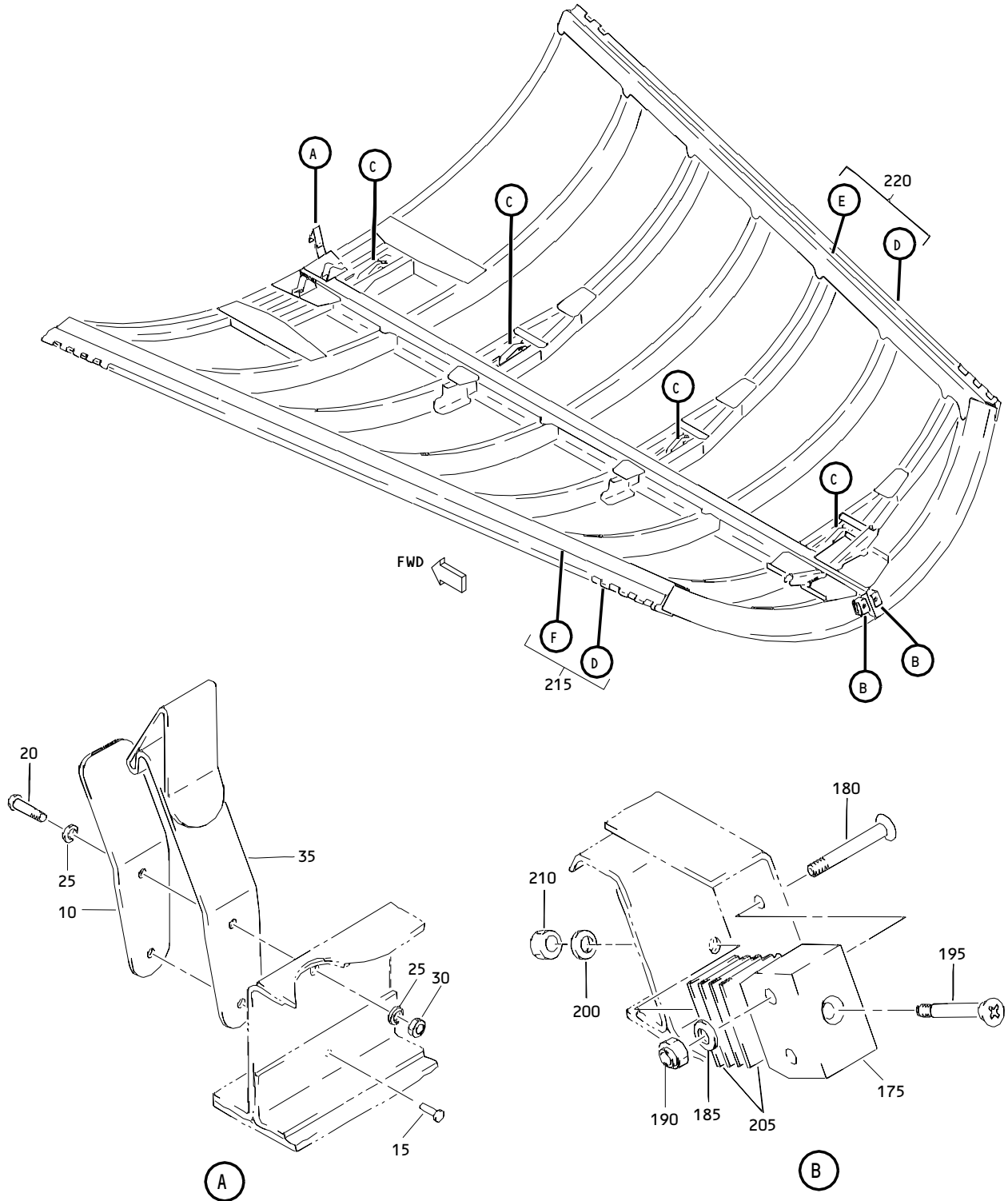
52-48-33

 ILLUSTRATED PARTS LIST
 01.1 Page 1007
 Nov 01/02

PART NUMBER	AIRLINE PART NO.	FIG.	ITEM	TTL REQ
287T0014-211		1	350	1
287T0015-167		1	315	8
287T0015-168		1	330	8
287T0015-427		1	332	1
287T0015-429		1	333L	1
287T0015-666		1	333F	1
62547-8-19		1	180	2
65B02771-69		1	95	4
65B02771-77		1	60	4
67832-524		1	80	8
67832CD4		1	55A	4
67832CD428		1	55A	4
67832CD524		1	80A	8
678324		1	55	4
678324CD		1	55A	4
678325		1	80	8
69B00855-1		1	40	4
69B00940-1		1	70	4
96-02		1	30	1
96-82		1	260	30

52-48-33

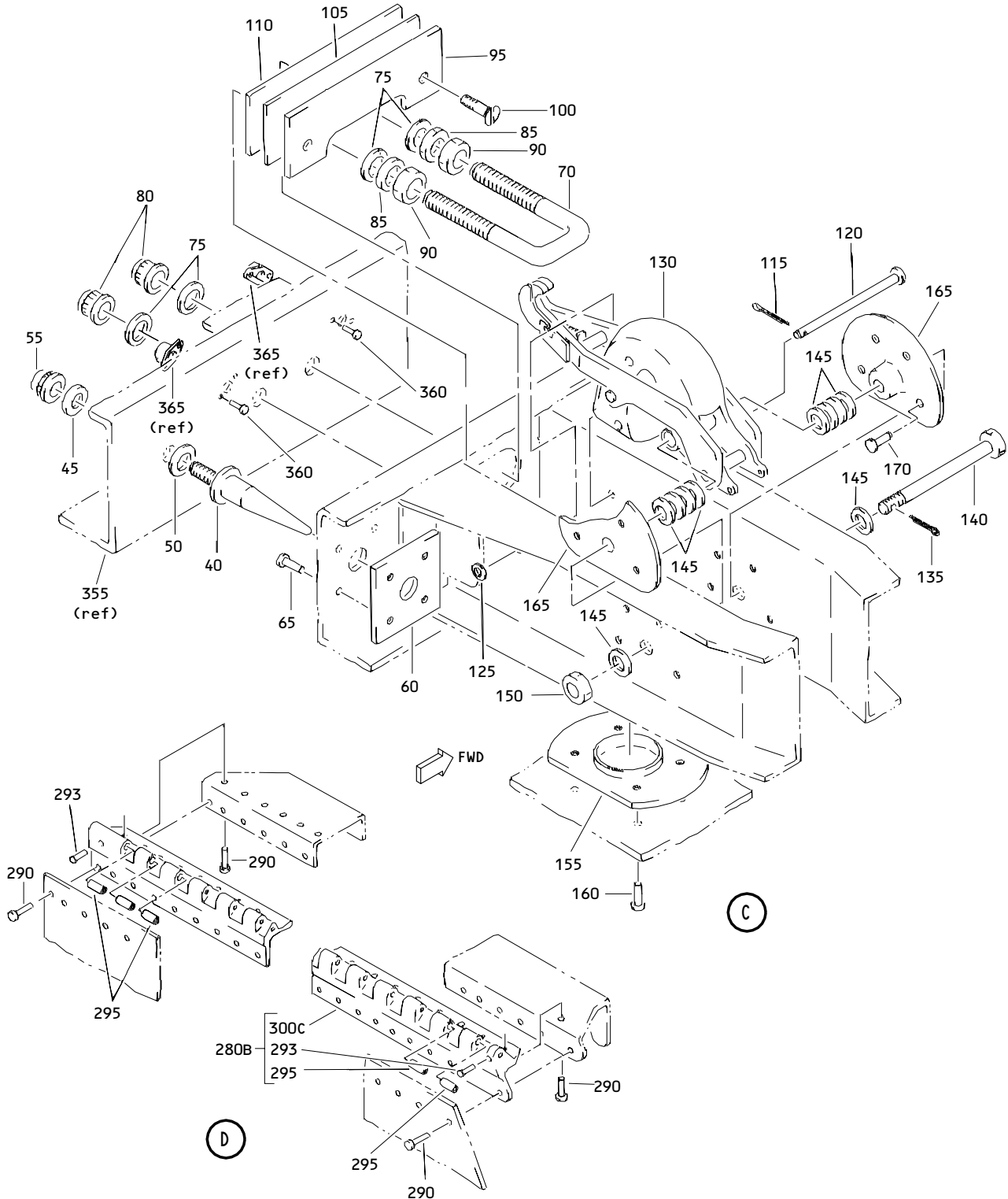
 ILLUSTRATED PARTS LIST
 01.1 Page 1008
 Nov 01/02



Auxiliary Power Unit Access Door Assembly
 Figure 1 (Sheet 1)

52-48-33

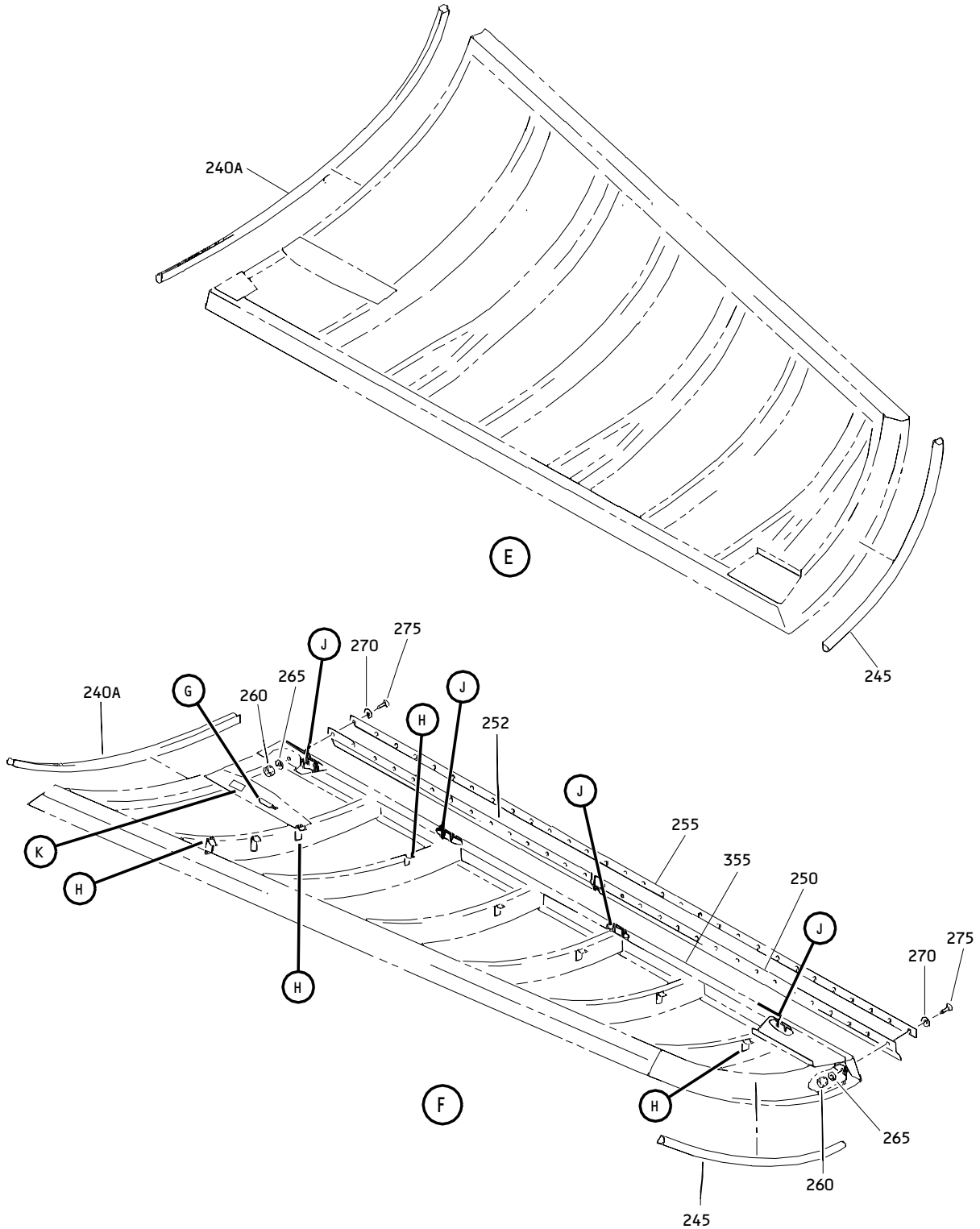
ILLUSTRATED PARTS LIST
 01.1 Page 1009
 Nov 01/02



Auxiliary Power Unit Access Door Assembly
 Figure 1 (Sheet 2)

52-48-33

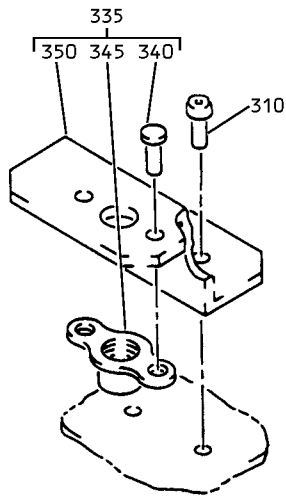
ILLUSTRATED PARTS LIST
 01.1 Page 1010
 Nov 01/02



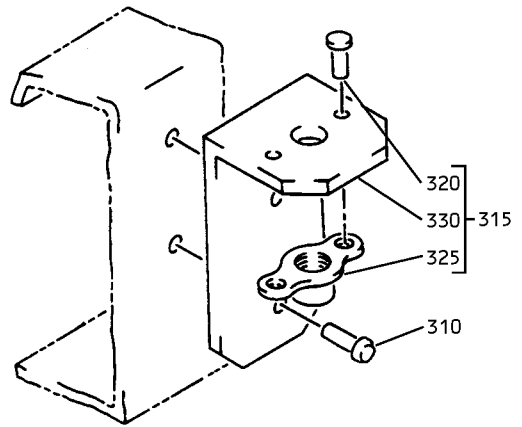
Auxiliary Power Unit Access Door Assembly
Figure 1 (Sheet 3)

52-48-33

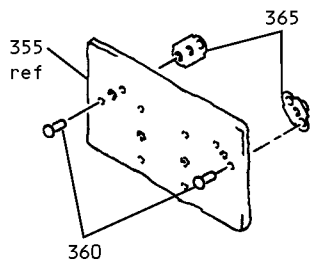
ILLUSTRATED PARTS LIST
01.1 Page 1011
Nov 01/02



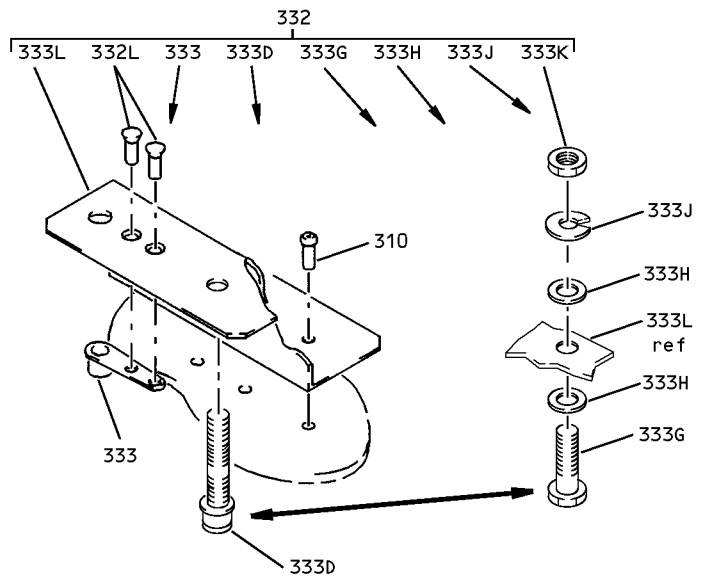
G



H



J



K

Auxiliary Power Unit Access Door Assembly
 Figure 1 (Sheet 4)

52-48-33

ILLUSTRATED PARTS LIST
 01.1 Page 1012
 Nov 01/02


BOEING
 COMPONENT
 MAINTENANCE MANUAL

FIG. & ITEM	PART NO.	AIRLINE PART NUMBER	NOMENCLATURE 1234567	EFF CODE	QTY PER ASSY
01-					
-1	148T6550-1		DOOR ASSY-APU ACCESS L SIDE	A	RF
-1A	148T6550-3		DOOR ASSY-APU ACCESS L SIDE	C	RF
-1B	148T6550-5		DOOR ASSY-APU ACCESS L SIDE	E	RF
-5	148T6550-2		DOOR ASSY-APU ACCESS R SIDE	B	RF
-5A	148T6550-4		DOOR ASSY-APU ACCESS R SIDE	D	RF
10	148T6568-3		.GUARD ATTACHING PARTS	B,D	1
15	BACR15FT5AD		.RIVET- (SIZE DETERMINE ON INST)	B,D	1
20	BACB30LK3-3		.BOLT	B,D	1
25	AN960PD10		.WASHER	B,D	2
30	H10-3BAC		.NUT- (V15653) (SPEC BACN10JC3) (OPT NS202101-02 (V80539)) (OPT RMLH9075-3W (V72962)) (OPT T6S1032J (V71087)) (OPT VN303A02 (V92215)) (OPT 96-02 (V80539)) (OPT BRH10A3 (V52828)) -----*	B,D	1
35	148T6569-1		.LATCH-DETENT	B,D	1
40	69B00855-1		.PIN	A,C,E	4
45	AN960PD416		.WASHER	A,C,E	4
50	NAS549ML516		.WASHER	A,C,E	4

52-48-33

 ILLUSTRATED PARTS LIST
 01.1 Page 1013
 Nov 01/02

FIG. & ITEM	PART NO.	AIRLINE PART NUMBER	NOMENCLATURE 1234567	EFF CODE	QTY PER ASSY
01-55	BMNN10HR4		.NUT- (V08524) (SPEC BACN10HR4) (OPT BMN10HR4 (V97928)) (OPT CR59064 (V62554)) (OPT H964 (V15653)) (OPT RMLH224 (V72962)) (OPT VAL280094 (V06710)) (OPT 678324 (V56878)) (OPT H96-4 (V15653)) (OPT ITEM 55A)	A,C,E	4

52-48-33

 ILLUSTRATED PARTS LIST
 01.1 Page 1014
 Nov 01/02


BOEING
 COMPONENT
 MAINTENANCE MANUAL

FIG. & ITEM	PART NO.	AIRLINE PART NUMBER	NOMENCLATURE 1234567	EFF CODE	QTY PER ASSY
01- -55A	H51560-4		.NUT- (V15653) (SPEC BACN10HR4CD) (OPT 67832CD428 (V56878)) (OPT BMN5024CWD3-4 (V97928)) (OPT 102LH9031-4 (V72962)) (OPT BH00303CM4 (V27238)) (OPT BMN5024CW34 (V97928)) (OPT CR60304 (V62554)) (OPT H51560 (V15653)) (OPT SL7108C4 (V11815)) (OPT VCU0005D4 (V06710)) (OPT 102LH90314 (V72962)) (OPT 67832CD4 (V56878)) (OPT BH003024CD (V27238)) (OPT BMN10HR4CD (V97928)) (OPT CR59064CD (V62554)) (OPT H964CD (V15653)) (OPT RMLH224CD (V72962)) (OPT VAL280094CD (V06710)) (OPT 678324CD (V56878)) (OPT ITEM 55)	A,C,E	4
60	65B02771-77		.PLATE ATTACHING PARTS	B,D	4
65	BACR15CE5		.RIVET- (SIZE DETERMINE ON INST) -----*-----	B,D	16

52-48-33

 ILLUSTRATED PARTS LIST
 01.1 Page 1015
 Nov 01/02

FIG. & ITEM	PART NO.	AIRLINE PART NUMBER	NOMENCLATURE 1234567	EFF CODE	QTY PER ASSY
01- 70 75 80	69B00940-1 AN960PD516 BMNN10HR5		.BOLT-U .WASHER .NUT- (V08524) (SPEC BACN10HR5) (OPT BMN10HR5 (V97928)) (OPT CR59065 (V62554)) (OPT H965 (V15653)) (OPT RMLH225 (V72962)) (OPT VAL280095 (V06710)) (OPT 678325 (V56878)) (OPT H96-5 (V15653)) (OPT RMLH22-5 (V72962)) (OPT SL7058S524 (V11815)) (OPT 67832-524 (V56878)) (OPT BMN10HR5 (V97928)) (OPT ITEM 80A)	A,C,E A,C,E A,C,E	4 16 8

52-48-33

 ILLUSTRATED PARTS LIST
 01.1 Page 1016
 Nov 01/02


BOEING
 COMPONENT
 MAINTENANCE MANUAL

FIG. & ITEM	PART NO.	AIRLINE PART NUMBER	NOMENCLATURE 1234567	EFF CODE	QTY PER ASSY
01- -80A	H51560-5		.NUT- (V15653) (SPEC BACN10HR5CD) (OPT 67832CD524 (V56878)) (OPT 102LH9031-5 (V72962)) (OPT BH00303CM5 (V27238)) (OPT SL7108C524 (V11815)) (OPT BH00303CM5 (V27238)) (OPT BMN5024CWD35 (V97928)) (OPT CR60305 (V62554)) (OPT SL7108C5 (V11815)) (OPT SL7108C5 (V11815)) (OPT VCU0005D5 (V06710)) (OPT 102LH90315 (V72962)) (OPT ITEM 80)	A,C,E	8
85	AN316-5R		.NUT	A,C,E	8
90	NAS509-5		.NUT	A,C,E	8
95	65B02771-69		.PLATE ATTACHING PARTS	A,C,E	4
100	NAS514P1032-10P		.SCREW	A,C,E	8
105	148T6559-31		.SHIM	A,C,E	4
110	148T6559-30		.SHIM -----*-----	A,C,E	4
112	BRFM20A3		DELETED ATTACHING PARTS		
113	BACR15BA33		DELETED		
115	MS24665-132		.PIN-COTTER	B,D	4
120	MS20392-2C63		.PIN-DRILLED SHANK	B,D	4
125	AN960PD10		.WASHER	B,D	4
130	H245-7		.LATCH- (V83014) (SPEC 10-60401-6) (OPT ITEMS 130A, 130B)	B,D	4

52-48-33

ILLUSTRATED PARTS LIST

01.1

Page 1017

Nov 01/02

FIG. & ITEM	PART NO.	AIRLINE PART NUMBER	NOMENCLATURE 1234567	EFF CODE	QTY PER ASSY
01- -130A	H245-9		.LATCH- (V83014) (SPEC 10-60401-6) (OPT ITEMS 130, 130B)	B,D	4
-130B	TL10185-103		.LATCH- (V76017) (SPEC 10-60401-6) (OPT ITEMS 130, 130A)	B,D	4
135	MS24665-134		.PIN-COTTER	B,D	4
140	BACB30NE4D30		.BOLT	B,D	4
140A	NAS6704D30		DELETED		
140B	BACB30NE4D30		DELETED		
145	AN960PD416L		.WASHER	B,D	40
150	BACN10JD4		.NUT -----*-----	B,D	4
155	148T6567-1		.SCUPPER ATTACHING PARTS	B,D	4
160	BACR15FT4AD		.RIVET- (SIZE DETERMINE ON INST) -----*-----	B,D	16
165	148T6560-1		.FITTING-LATCH PIVOT ATTACHING PARTS	B,D	8
170	BACR15FT5		.RIVET- (SIZE DETERMINE ON INST) -----*-----	B,D	32
175	148T6514-1		.STOP-AFT		1

52-48-33

 ILLUSTRATED PARTS LIST
 01.1 Page 1018
 Nov 01/02


BOEING
 COMPONENT
 MAINTENANCE MANUAL

FIG. & ITEM	PART NO.	AIRLINE PART NUMBER	NOMENCLATURE 1234567	EFF CODE	QTY PER ASSY
01-					
180	HL19PB8-19		ATTACHING PARTS .BOLT- (V56878) (SPEC BACB30FN8-19) (OPT HL19PB8-19 (V73197)) (OPT HL19PB8-19 (V92215)) (OPT HL19PB8-19 (V97928)) (OPT 62547-8-19 (V56878)) (OPT HL19PB8-19 (V80539)) (OPT WC258-19 (V60516)) (OPT HL19PB8-19 (V60516)) (OPT HL19PB8-19 (V08524))		2
185	AN960PD416L		.WASHER		2
190	BACN10JC4		.NUT		2
195	BACB30LR4-20		.BOLT		1
200	AN960PD416L		.WASHER		1
205	BACS40R10B14F		.SHIM		4
210	BACN10JC4		.NUT		1
			-----*		
215	148T6551-1		.STRUCTURE ASSY	A	1
-215A	148T6551-7		.STRUCTURE ASSY	C	1
-215B	148T6551-13		.STRUCTURE ASSY	E	1

52-48-33

 ILLUSTRATED PARTS LIST
 01.1 Page 1019
 Nov 01/02

FIG. & ITEM	PART NO.	AIRLINE PART NUMBER	NOMENCLATURE 1234567	EFF CODE	QTY PER ASSY
01-					
220	148T6551-2		.STRUCTURE ASSY	B	1
-220A	148T6551-8		.STRUCTURE ASSY	D	1
-225	148T6566-1		..SEAL INSTL	A,C,E	1
-230	148T6566-2		..SEAL INSTL	B,D	1
240A	148T6566-14		...SEAL-FWD (MFD RFOM EXTR RUBBER BAC1530-141 X 39.0 IN. OPT BAC1530-19 X 39.0 IN)		1
245	148T6566-10		...SEAL-AFT (MFD FROM EXTR RUBBER BAC1530-141 X 25.0 IN OPT BAC1530-19 X 25.0 IN)		1
250	148T6566-12		...SEAL-BLO (MFD FROM EXTR RUBBER 10-60754-115 X 40.22 IN)	A,C,E	1
252	148T6566-13		...SEAL-BLO (MFD FROM EXTR RUBBER 10-60754-115 X 33.66 IN)	A,C,E	1
255	148T6559-34		...RETAINER-SEAL ATTACHING PARTS	A,C,E	1
260	H10-08BAC		...NUT- (V15653) (SPEC BACN10JC08) (OPT NS202101-82 (V80539)) (OPT RMLH9075-82W (V72962)) (OPT T6S832J (V71087)) (OPT VN303A82 (V92215)) (OPT 96-82 (V80539)) (OPT BRH10A08 (V52828))	A,C,E	30
265	AN960PD8		...WASHER	A,C,E	30
270	NAS43DD3-4		...SPACER	A,C,E	30
275	NAS514P832-7		...SCREW	A,C,E	30
			-----*-----		
280A	148T6511-13		DELETED		

52-48-33

 ILLUSTRATED PARTS LIST
 01.1 Page 1020
 Nov 01/02


BOEING
 COMPONENT
 MAINTENANCE MANUAL

FIG. & ITEM	PART NO.	AIRLINE PART NUMBER	NOMENCLATURE 1234567	EFF CODE	QTY PER ASSY
01-					
280B	148T6511-19		..HINGE ASSY	A,C,E	1
-285A	148T6511-14		DELETED		
-285B	148T6511-20		..HINGE ASSY	B,D	1
			ATTACHING PARTS		
290	BACR15FT5AD		..RIVET-		182
			(SIZE DETERMINE ON INST)		
			-----*		
293	MS16562-191		...PIN-SPR		2
295	148T8223-1		...BUSHING		5
300A	148T6511-15		DELETED		
300B	148T6511-17		DELETED		
300C	148T6511-21		...FITTING	A,C,E	1
-305A	148T6511-16		DELETED		
-305B	148T6511-18		DELETED		
-305C	148T6511-22		...FITTING	B,D	1
310	BACR15FT5AD		..RIVET-	A,C,E	21
			(SIZE DETERMINE ON INST)		
315	287T0015-167		..SUPPORT ASSY-WIRE	A,C,E	8
320	BACR15BA3AD		...RIVET-	A,C,E	2
			(SIZE DETERMINE ON INST)		
325	BRM200A3		...NUTPLATE-	A,C,E	1
			(V52828)		
			(SPEC BACN10JP3A)		
			(OPT MK1000-3BAC		
			(V15653))		
			(OPT NS103197-02		
			(V80539))		
			(OPT RMA9201M3		
			(V72962))		
			(OPT T8076S1032		
			(V11815))		
			(OPT VN202A1-02		
			(V92215))		
			(OPT ITEM 325A)		

52-48-33

 ILLUSTRATED PARTS LIST
 01.1 Page 1021
 Nov 01/02

FIG. & ITEM	PART NO.	AIRLINE PART NUMBER	NOMENCLATURE 1234567	EFF CODE	QTY PER ASSY
01- -325A	BRM100A3		...NUTPLATE- (V52828) (SPEC BACN10JP3B) (OPT MK2000-3BAC (V15653)) (OPT NS103198-02 (V80539)) (OPT RMA9207-3 (V72962)) (OPT T8077S1032 (V11815)) (OPT VN201A1-02 (V92215)) (OPT ITEM 325)	A,C,E	1
330	287T0015-168		...ANGLE	A,C,E	1
332	287T0015-427		..STUD ASSY-GND	E	1
332L	BACR15BA3AD		...RIVET- (SIZE DETERMINE ON INST)	E	2
333	BRM100A3		...NUTPLATE- (V52828) (SPEC BACN10JP3B) (OPT MK2000-3BAC (V15653)) (OPT NS103198-02 (V80539)) (OPT RMA9207-3 (V72962)) (OPT VN201A1-02 (V92215)) (OPT T8077S1032 (V11815))	E	1
333D	VNS1924CA1-8		...STUD-GRD (V5M902) (SPEC BACS53B1EA1) (OPT VNS1924CA3-1-8 (V92215)) (OPT ITEM 333F)	E	1
-333F	287T0015-666		...STUD ASSY-GRD (OPT ITEM 333D)	E	1
333G	NAS1801-3-12	SCREW	E	1
333H	NAS1149D0316H	WASHER	E	2
333J	MS35338-43	WASHER	E	1
333K	MS35650-305T	NUT	E	1
333L	287T0015-429		...ZEE	E	1

52-48-33

 ILLUSTRATED PARTS LIST
 01.1 Page 1022
 Nov 01/02


BOEING
 COMPONENT
 MAINTENANCE MANUAL

FIG. & ITEM	PART NO.	AIRLINE PART NUMBER	NOMENCLATURE 1234567	EFF CODE	QTY PER ASSY
01- 335	287T0014-209		..ZEE ASSY	A,C,E	1
340	BACR15BA3AD		...RIVET- (SIZE DETERMINE ON INST)	A,C,E	2
345	BRM100A3		...NUTPLATE- (V52828) (SPEC BACN10JP3B) (OPT MK2000-3BAC (V15653)) (OPT NS103198-02 (V80539)) (OPT RMA9207-3 (V72962)) (OPT T8077S1032 (V11815)) (OPT VN201A1-02 (V92215)) (OPT ITEM 345A)	A,C,E	1
-345A	BRM200A3		...NUTPLATE- (V52828) (SPEC BACN10JP3A) (OPT MK1000-3BAC (V15653)) (OPT NS103197-02 (V80539)) (OPT RMA9201M3 (V72962)) (OPT T8076S1032 (V11815)) (OPT VN202A1-02 (V92215)) (OPT ITEM 345)	A,C,E	1

52-48-33

ILLUSTRATED PARTS LIST

01.1

Page 1023

Nov 01/02

FIG. & ITEM	PART NO.	AIRLINE PART NUMBER	NOMENCLATURE 1234567	EFF CODE	QTY PER ASSY
01-					
350	287T0014-211		...ZEE	A,C,E	1
355	148T6558-7		..CHANNEL ASSY	A,C,E	1
360	BACR15BA3AD		...RIVET- (SIZE DETERMINE ON INST)	A,C,E	16
365	BRFM20A3		...NUTPLATE- (V52828) (SPEC BACN10JN3) (OPT MF1000-3BAC (V15653)) (OPT NS103218-02 (V80539)) (OPT RMF9201M3 (V72962)) (OPT VN252A02 (V92215)) (OPT MF1000-3BAC (V15653)) (OPT MF53049-3 (V15653))	A,C,E	8

- Item Not Illustrated

52-48-33

ILLUSTRATED PARTS LIST

01.1

Page 1024

Nov 01/02